

www.meekellecostumes.com

Meekelle

INC.



2018-2019 Costume Catalog

(337) 288-1767 ph

bmeekelle@aol.com



C-20181

Dirty Mercy

Leotard has mesh upper neckline and mesh inserts on side front with full mesh back and strap detail.

Rhinestones, applique and arm mitts sold separately.

*(Shown in Mesh fog and Mist foil).
Available in any color and fabric.*

C-20182

Fame

*Leotard has ruffled shoulder and front
detail with mesh lined center
detail with short sleeves and keyhole back.*

(Shown in Cire lycra and Mesh.)

Available in any color and fabric.



www.meekellecostumes.com

C-20183

Haberdash

*One piece set has ruffled sleeveless bodice with attached
hot pants and cut out back.*

Choker sold separately.

*(Shown in Nylon lycra, Georgette, and Mist.)
Available in any color and fabric.*



(337) 288-1767 ph bmeekelle@aol.com

www.meekellecostumes.com

C-20184

Jadore

Leotard has sweetheart inspired neckline with mesh off the shoulder sleeves and skirted attached trunk with lace up back detail.

Appliques, feathers and rhinestones sold separately.

*(Shown in Cire, mesh, and velvet.)
Available in any fabric.*

bmeekelle@aol.com

(337) 288-1767 ph

www.meekellecostumes.com

INC.



C-20185
Soiree

*Leotard has diamond mesh
overlay with ruffled sleeves
and back bustle with
butt bow.*

*Rhinestones, lace rosettes,
Sequin rosette trim,
choker, hairpc and arm mitts
sold separately.*

*(Shown in Diamond Mesh and Nylon
Lycra with Stiff.)*

Available in any color and fabric.

www.meekellecostumes.com

bmeekelle@aol.com

(337) 288-1767 ph



C-20186

Shake your love

*Dress has sleeveless banded
designed bodice with sheer
inserts at waist and back with
black beaded double layered
fringe and attached trunks.*

Applique sold separately.

*(Shown in Mesh fog, and Nylon lycra.)
Available in any color and fabric.*

www.meekellecostumes.com



C-20187
Sway

Dress has sleeveless banded
designed bodice with sheer
inserts at waist and back with
6" silver beaded double
layered fringe and
attached trunks.

Rhinestones sold separately

(Shown in Mesh fog and Nylon
Lycra.)
Available in any color and fabric.

bmeekelle@aol.com

(337) 288-1767 ph

www.meekellecostumes.com

C-20188

Envy

*Two piece set has v
designed neckline and pull
on skirted dance trunk.*

*Feathers and rhinestone
applique sold separately.*

(Shown in Pop dot mesh and mist.)

Available in any fabric.



www.meekellecostumes.com

(337) 288-1767 ph bmeekelle@aol.com



C-20189
Jet Setter

*Leotard has mesh polka dot design
over nude bra and sheer middle
inserts with double sided pleated
and stiffened skirt*

*Ostrich feather shoulder trim ,
choker and Arm mitts sold
separately.*

*(Shown in Polka dot Mesh with Nylon
Lycra.)
Available in any color and fabric.*

www.meekellecostumes.com

C-201810

Wicked

Leotard has two tone design at neckline with stiff accented shoulders and mesh attached midriff with lace overlay on bra and lace skirted trunks.

Rhinestones and Arm mitts sold separately.

*(Shown in Croc, Mesh and Velvet.)
Available in any color and fabric.*



www.meekellecostumes.com



*C-201811
Cosmopolitan
Two piece set has sleeveless
look with mesh back and
banded pull on dance shorts
with attached stiff sheer
over skirt.*

*Lace applique with
rhinestone applique sold
separately.*

*(Shown in Glitter velvet Damask
with Mist foil.)
Available in any color and fabric.*



*C-201812
Superficial
Two piece set has
sleeveless top and mesh
back
with banded pull on
skirted hot pants.*

*Ostrich feather trim,
lace bodice applique,
and rhinestone
appliques sold
separately.*

*(Shown in Floral glitter
velvet and Mist foil.)
Available in any color and
fabric.*

www.meekellecostumes.com

bmeekelle@aol.com

(337) 288-1767 ph

C-201813
Me Oh My
Biketard has v neckline, no sleeves
and strappy, open back detail.

Ostrich feather shoulder trim, metallic
lace bodice, rhinestone appliques, and
hairpc sold separately.

(Shown in Croc and Mist foil.)
Available in any color and fabric.



www.meekellecostumes.com

(337) 288-1767 ph bmeekelle@aol.com



C-201814

In the Money

Leotard has ruffled front top and sleeve bands with keyhole front center and double ruffled booty skirts.

Rhinestones, wrist mitts, and hair rosettes sold separately.)

(Shown in Mist foil, vertical stiff, and sold stiff.)

Available in any color and fabric.

www.meekellecostumes.com

C-201815

Rockin Out

Biketard has overlaid center flocked design with strap detail on back with double bustle skirt.

Rhinestones and Wrist mitts sold separately.

*(Shown in Scroll flocked tulle and Mist foil.)
Available in any color and fabric.*



www.meeekellecostumes.com

C-201816

Wrap it up

Leotard has glitter mesh overlay with mesh sleeves and inserts at midriff with attached hip to back stiff sheer skirt.

Lace appliques, rhinestones and hair poofs sold separately.

*(Shown in glitter mesh and mist.)
Available in any fabric.*

www.meekellecostumes.com

C-201817
Bosa Nova
Leotard with halter style neck
and mesh
inserts with ruffled booty.
Rhinestones, lace appliques, hair
piece and
arm mitts sold separately.
(Shown in Shattered glass and
Mesh.)
Available in any fabric.





C-201818

Sour patch

*Two piece set has cinched halter
style bra with pull on back stiff
skirted bustle and bow.*

Lace appliques sold separately.

*(Shown in Glass and Scroll stiff.)
Available in any fabric*

www.meekellecostumes.com



*C-201819
Roller Derby*

*Unitard has mesh designed
bodice and side inserts
with mesh back and ruffled
booty.*

*Arm mitts and hair poofs sold
separately.*

*(Shown in Glass and mesh.)
Available in any fabric.*

www.meekellecostumes.com

bmeekelle@aol.com

(337) 288-1767 ph



C-201820

Runaround

*Two piece set has banded
neckline and mesh sleeves
with double flair cuffs and
pull on hot pants with
holo sequin tulle and stiff back
skirt.*

Rosettes sold separately

*(Shown in Holo Mesh , Sparkle Spandex
and Holo Tulle.).*

Available in any color and fabric.

www.meekellecostumes.com

C-201821

BeBop

*Leotard has halter style
neckline and insert details at
waist with attached glitter
bustle.*

*Lace appliques, rhinestone
pears, and hairpc sold
separately.*

*(Shown in Velvet, Holo Mesh,
Striped lycra, and Mesh)
Available in any color and fabric.*

www.meekellecostumes.com

bmeekelle@aol.com

(337) 288-1767 ph

C-201822
Sit Next to Me
Biketard has mesh
sleeves and banded neckline
with
v open design on front
midriff and attached
hot pants.

(Shown in Holo mesh and Sparkle
Spandex.)
Available in any color and fabric.



www.meekellecostumes.com

C-201823

Blazin' blueberries

Leotard has strap neck detail and cut out side front to back with attached back bustle.

Lace appliques, rhinestones and hairpiece sold separately.

*(Shown in mist and stiff.)
Available in any color and fabric.*



C-201824

Sassy chic

Two piece set has strap detail crop top with pull on dance trunks with built in back bustle.

Rhinestones and Sequin trim sold separately.

*(Shown in Mist foil and stiff glitter.)
Available in any color and fabric.*

www.meekellecostumes.com



C-201825

My all

One piece biketard has lace sleeves and lace detail on inserts at waist with banded center detail.

Rhinestones sold separately.

(Shown in Nylon Lycra and Olivia lace.)

Available in any color and fabric.

www.meekellecostumes.com

bmeekelle@aol.com

(337) 288-1767 ph

C-201826
*Winner takes all
Leotard has lace sleeves and inset
details.*

Rhinestones sold separately.

*(Shown in Nylon lycra and Lace.)
Available in any color and fabric.*

bmeekelle@aol.com
(337) 288-1767 ph

www.meekellecostumes.com

(337) 288-1767 ph bmeekelle@aol.com



www.meekellecostumes.com

C-201828

Showman

Leotard has satin collar and high neck design with satin ruffled booty.

Rhinestones, Beaded embellishments, and applique sold separately.

*(Shown in Nylon lycra and Satin.)
Available in any color and fabric.*

www.meekellecostumes.com

C-201829

Ashante

*Leotard has one shoulder sleeve design with mesh insert
at waist and attached side hip bustle.*

Lace appliques and choker sold separately.

*(Shown in Croc and mesh.)
Available in any color and fabric.*



bmeekelle@aol.com

(337) 288-1767 ph

www.meekellecostumes.com

bmeekelle@aol.com

(337) 288-1767 ph



C-201830

Feel it still

*Leotard has v designed mesh
insert at neckline and
mesh sleeves with shoulder
cap design and
sequin center detail.*

*(Shown in Sequin Brocade, Nylon
lycra and Mesh.
Available in any fabric.*

www.meekellecostumes.com

INC.



C-201831

Think

One shoulder mesh dress has attached sweetheart bra with mesh sleeve and peek a boo opening in center with pull on shorts.

Sequin trim and rhinestones sold separately.

*(Shown in Mist foil and Mesh.)
Available in any color and fabric.*



C-201832

Fly me to the moon

*Two piece set has v neck
inspired top with mesh sleeves
and pull on a line shorter front
and longer back trunk.*

*Sequin appliques, and rhinestones
sold separately.*

*(Shown in Nylon lycra and mesh.)
Available in any color and fabric.*

www.meekellecostumes.com

C-201833

Unforgettable

*Dress has v front neckline
and fitted A-line skirt with
cinched back and strap
detail with built in
biketard.*

*Sequin applique and
Rhinestones sold separately.*

*(Shown in Nylon lycra and
Mesh.)*

Available in any color and fabric.

bmeekelle@aol.com

(337) 288-1767 ph

www.meekellecostumes.com





C-201834
Serenade

*Dress has v designed
neckline and cut
out sides and
back with attached
double strap
accents and long
lace style skirt.*

*Applique and
rhinestones sold
separately.*

*(Shown in Lace and
nylon lycra.)
Available in any fabric.*

C-201835

Written in the Water

*Dress has halter style
top and lace lined bra
with strap detail
cut out center and
back with built in
side to side back skirt.*

*Rhinestones sold
separately.*

*(Shown in Nylon lycra and
Sachet lace.)*

Available in any color and fabric.





C-201836
*Change is gonna come
Leotard has
ruched halter style
neckline and ruched mesh
midriff with attached
trunks.*

*Sequin appliques sold
separately.*

*(Shown in Mesh and Nylon
lycra.)
Available in any color and fabric.*

bmeekelle@aol.com

(337) 288-1767 ph

www.meekellecostumes.com

Meekelle INC.

C-201837
All I could do
Dress designed with
lace sleeves and
inserts on bodice
with attached front open
lace skirt.

Lace trim and Rhinestones
pears sold separately.

(Shown in lace and Nylon lycra.)
Available in any color and fabric.



www.meekellecostumes.com



C-201838

Song of glory

*Two piece set has halter
style top with banded pull on trunks
with attached side skirt.*

*Rhinestones and appliques
sold separately.*

*(Shown in Nylon lycra and mesh.)
Available in any color and fabric.*

bmeekelle@aol.com

(337) 288-1767 ph

www.meekellecostumes.com

C-201839

I am woman

*Dress has open v neckline and
mesh attached sleeves and
midriff with skirted trunks.*

*Lace appliques and
rhinestones
sold separately.*

*(Shown in Nylon lycra and Mesh.)
Available in any fabric.*



(337) 288-1767 ph bmeekelle@aol.com

www.meekellecostumes.com



C-201840

Unforgettable

Dress has v front neckline and fitted A-line skirt with cinched back and strap detail with built in biketard.

Rhinestones sold separately.

*(Shown in Nylon lycra and Mesh.)
Available in any color and fabric.*

www.meekellecostume.com

C-201841

Secret Garden

*Dress has one shoulder
designed sweetheart
style opposite mesh
halter style with
attached strip skirt and
built in shorts.*

*Lace appliques, rhinestones
and hairpiece sold
separately.*

*(Shown in Nylon lycra and
Mesh.)*

Available in any color and fabric.



bmeekelle@aol.com

(337) 288-1767 ph

www.meekellecostumes.com

Meekelle

INC.

bmeekelle@aol.com

(337) 288-1767 ph

C-201842

Reflection

Dress has pull on bra and trunks with A line designed mesh overlay that gathers at neckline with neck band.

Rhinestones and Lace applique sold separately.

*(Shown in Mesh and Nylon lycra.)
Available in any color and fabric.*

www.meekellecostumes.com

(337) 288-1767 ph bmeekelle@aol.com



C-201843

Marching On

Dress has gathered mesh overlay bodice with mesh designed inserts and open front mesh skirt with attached shorts.

Lace trim and rhinestones sold separately.

(Shown in in Nylon lycra and Mesh.)

Available in any color and fabric.

www.meekellecostumes.com

bmeekelle@aol.com

(337) 288-1767 ph



C-201844
*I have nothing
Biketard has one shoulder
design with lined front
mesh bodice with
attached shorts and side hip
skirt design.*

*Lace appliques and Rhinestones sold
separately.*

*(Shown in Mesh and Velvet.)
Available in any color and fabric.*

www.meekellecostumes.com



C-201845

Leaving

Dress has overlaid mesh side front and mesh accents in back that split open for a dramatic effect and built in biketard.

Lace and rhinestone neckpiece sold separately.

*(Shown in Mesh and Velvet.)
Available in any color and fabric.*

www.meekellecostumes.com

C-201846

I'll try

*Dress has mesh inserted sweetheart
top design with sequin detail on bra
and mesh uneven skirt with
attached trunks.*

*(Shown in Sequin, Nylon lycra and Mesh.)
Available in any fabric.*



bmeekelle@aol.com

(337) 288-1767 ph

www.meekellecostumes.com



C-201847

Another time

*Two piece set has keyhole
design front bodice
with sheer sleeves
and fitted mesh skirt with
pull on hot pants.*

Lace trim sold separately.

*(Shown in Nylon Lycra and Mesh.)
Available in any color and fabric.*

bmeekelle@aol.com

(337) 288-1767 ph

www.meekellecostumes.com



C-201848


Never enough

*Dress has asymmetrical
top design with back
strap detail and
long A-symmetrical skirt
with built in trunks.*

Lace trim sold separately.

(Shown in Nylon lycra and Mesh.)

Available in any color and fabric.



C-201849
Dream a dream
Dress has gathered mesh
halter style neckline with
attached back skirt and
biketard.

Sequin lace trim sold separately.

*(Shown in Nylon lycra and Mesh.)
Available in any color and fabric.*

bmeekelle@aol.com

(337) 288-1767 ph

www.meekellecostumes.com



C-201850
Fairytale

*Dress has sweetheart neckline
with ruffle designed sleeves and
empire sarong type mesh skirt
with built in trunks*

Lace trim sold separately

(Shown in Nylon lycra and Mesh.)

bmeekelle@aol.com

(337) 288-1767 ph

www.meekellecostumes.com

bmeekelle@aol.com

(337) 288-1767 ph

C-201851

Lullaby

Two piece set has off the shoulder top with long mesh sleeves and attached aline skirt with pull on dance shorts.

Rhinestones and lace appliques sold separately.

*(Shown in Nylon lycra and mesh.)
Available in any color and fabric.*

www.meekellecostumes.com

Fabric Chart

Nylon Lycra and Mesh Colors

Color representation may differ from actual fabric and is subject to change

| | | | | | | | | | |
|--|-------------|---|-----------|---|--------------|--|---------------|---|--------------|
|  | Dusty Rose |  | Lilac |  | Coral |  | Yellow |  | Mint |
|  | Medium Pink |  | Plum |  | Lt Peach |  | Athletic Gold |  | Jade |
|  | Bubblegum |  | Orchid |  | Cantaloupe |  | Gold |  | Arabian Blue |
|  | Saphire |  | Purple |  | Sweet Potato |  | Celery |  | Aqua-marine |
|  | Navy |  | Hibiscus |  | Orange |  | Moss |  | Baby Blue |
|  | Corona |  | Cerise |  | Neon Orange |  | Olive |  | Sky Blue |
|  | Periwinkle |  | Fuchsia |  | Red |  | Kelly |  | Turquoise |
|  | Lt. Silver |  | Neon Pink |  | Wine |  | Neon Green |  | Kona |
|  | Silver |  | White |  | Merlot |  | Chartreuse | | |
|  | Black |  | Ivory |  | Brown | | | | |

****Please note!*

Not all fabrics have been listed here . Please email us for names and colors of fabrics you do not see above.

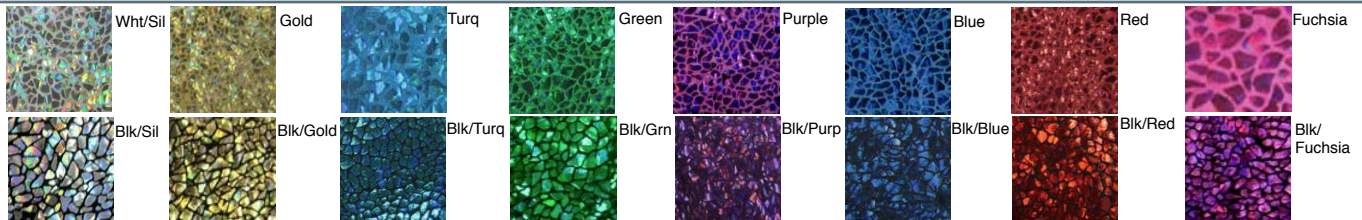
Meekelle
INC

P.O. Box 80506
Lafayette, La. 70598-0506
(337)288-1767 ph
bmeekelle@aol.com email
www.meekellecostumes.com
meekelleinc instagram/etsy

Mist Foil



Croc Foil



Sparkle Spandex

*****Hologram*****

OMBRE CROC

